

MONTHLY MEMBERSHIP PROGRESS REPORT

District 26 M3

Results as of: 2/29/2024

GMT:

LOCATION MISSOURI

GMT CA

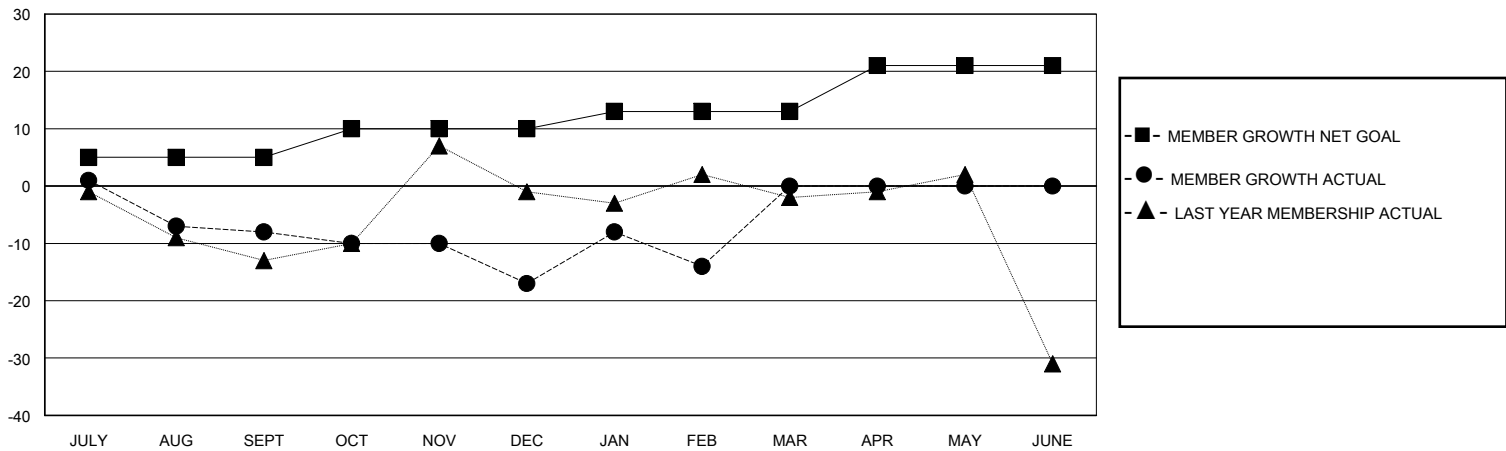
Clubs			
RESULTS FOR 2023-2024			
QUARTER	NEW CLUB GOAL	NEW CLUBS	DROPPED CLUBS
JULY/AUG/SEPT	0	0	0
OCT/NOV/DEC	1	0	1
JAN/FEB/MAR	0	0	1
APR/MAY/JUNE	0	0	0

Members			
RESULTS FOR 2023-2024			
QUARTER	MEMBER GROWTH NET GOAL	MEMBER GROWTH ACTUAL	DROPPED MEMBERS ACTUAL (including transfers)
JULY/AUG/SEPT	5	21	26
OCT/NOV/DEC	5	18	27
JAN/FEB/MAR	3	29	26
APR/MAY/JUNE	8	0	0

GOALS AND ACTUAL NEW CLUBS CUMULATIVE



GOALS AND ACTUAL MEMBERS CUMULATIVE



DROPPED CLUBS: 2	21 CLUBS OF 52 ADDED 1 OR MORE NEW MEMBERS	GENDER DISTRIBUTION	
		MALE 757 (70.95%)	FEMALE 310 (29.05%)
DROPPED MEMBERS		CLICK HERE FOR CUMULATIVE MEMBERSHIP DATA	TOTAL FAMILY UNIT MEMBERS 96
DECEASED 18	CLUB CANCELLED 12		FAMILY MEMBERS PAYING HALF DUES 49
OTHER 49	TOTAL 79		